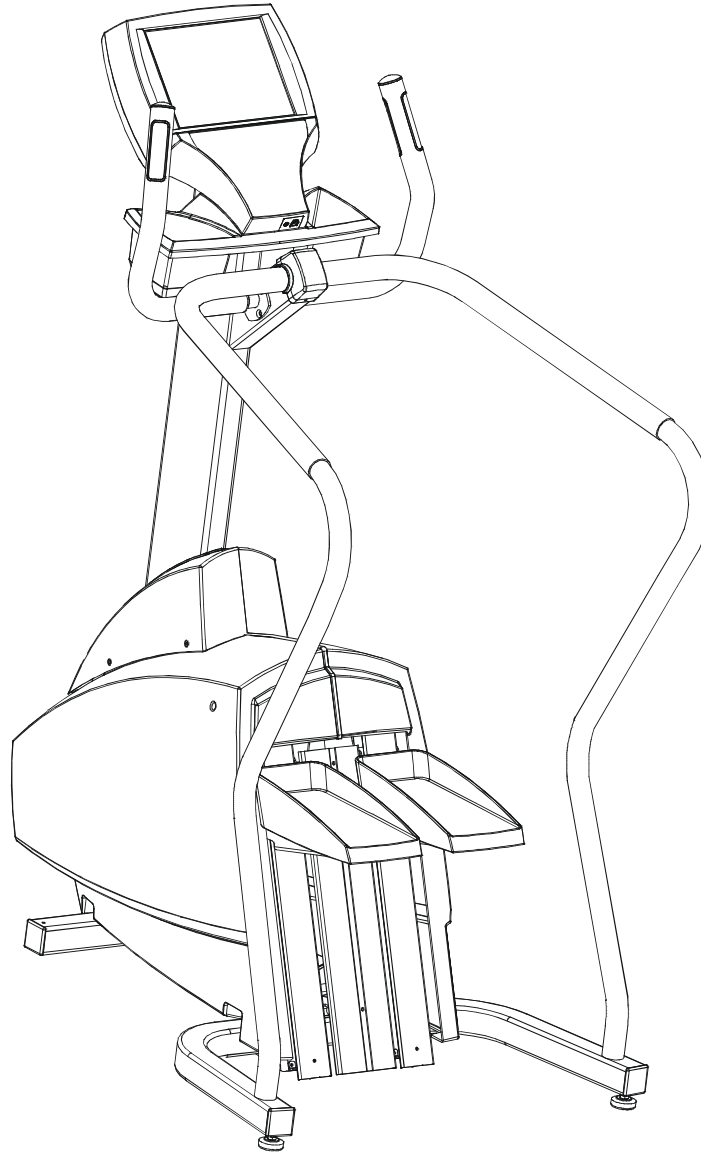


LifeFitness

ARCTIC SILVER 95Se Stairclimber



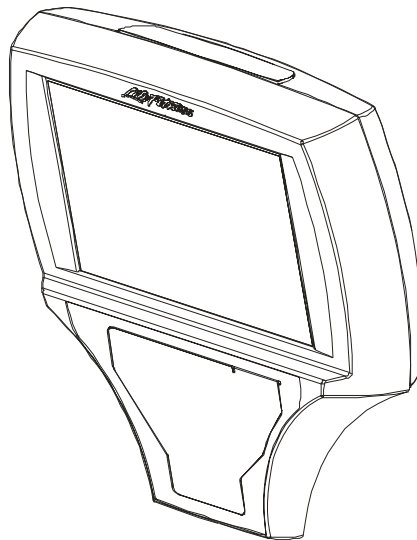
Customer Support Services
PARTS MANUAL rev. 12/15/05

ARCTIC SILVER 95Se
REFERENCES

95SE-0XXX-02
S/N ACG100000 and UP

OPERATION MANUAL	M051-00K47-A047
PARTS BAG	AK47-00123-0001
HARDWARE BAG	AK47-00106-0000
POWER SUPPLY 12V, 4.5A Without Line Cord	118E-00001-0161
LINE CORD, DOM. 10A 125V	0017-00003-0704
LINE CORD, CON. 10A 250V	0017-00003-0691
LINE CORD, 10A U.K.	0017-00003-0889
LINE CORD, AUSTRALIA	0017-00003-0918
TOUCH-UP PAINT: SPRAY CAN .5 OZ. BOTTLE .33 OZ. PEN	0017-00008-0204 0017-00008-0205 0017-00008-0206
SERVICE MANUAL	M051-00K47-A013

	Page
CONSOLE ASSEMBLY	4
CONSOLE COMPONENTS.....	5
FRAME COMPONENTS.....	6
SHROUDS AND PEDAL TUBE	7
PEDAL ASSEMBLY.....	8
CLUTCH/SHAFT/PULLEY ASSEMBLY	9
LEFT CLUTCH ASSEMBLY	10
CROSSOVER PULLEY ASSEMBLY	11
ALTERNATOR ASSEMBLY.....	12
GUIDE ROLLERS	13
POWER CONTROL BOARD & RESISTORS	14
POLAR CAP & HR ELECTRODES	15
CABLES.....	16

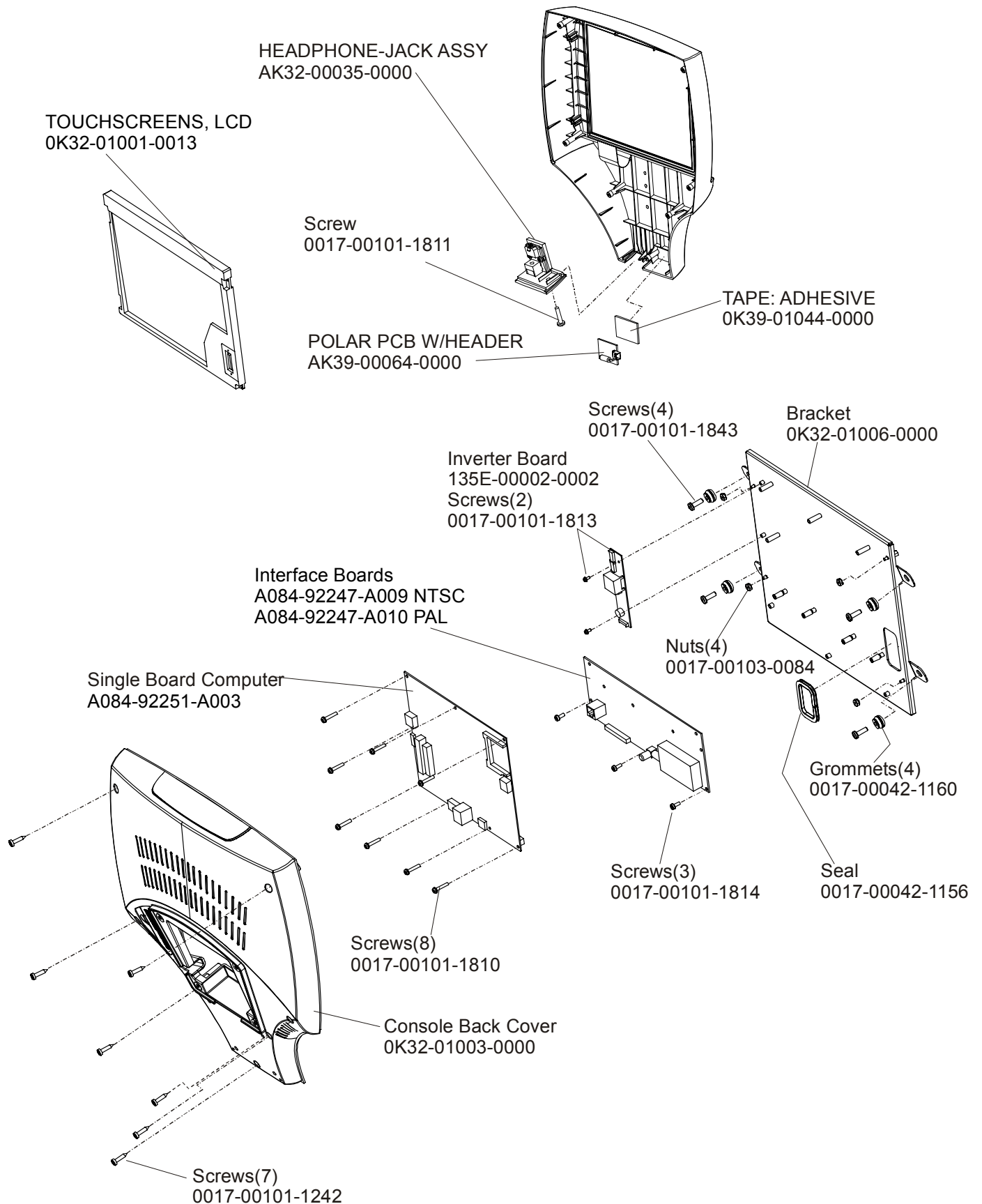


CONSOLE ASSEMBLY	
Part Number	Description
GK47-00002-0020	CONS-ASSY: NTSC;ENG
GK47-00002-0021	CONS-ASSY: NTSC;SPN
GK47-00002-0022	CONS-ASSY: NTSC;JAP
GK47-00002-0023	CONS-ASSY: NTSC;FRN
GK47-00002-0024	CONS-ASSY: NTSC;POR
GK47-00002-0025	CONS-ASSY: PAL;ENG
GK47-00002-0026	CONS-ASSY: PAL;GER
GK47-00002-0027	CONS-ASSY: PAL;SPN
GK47-00002-0028	CONS-ASSY: PAL;FRN
GK47-00002-0029	CONS-ASSY: PAL;ITL
GK47-00002-0030	CONS-ASSY: PAL;DUT
GK47-00002-0031	CONS-ASSY: PAL;POR

OVERLAY BEZEL ASSEMBLY	
Part Number	Description
AK63-00247-0001	BZL/SW W/OVERLAY ASSY: MFG; ENG
AK63-00247-0003	BZL/SW W/OVERLAY ASSY: MFG; GER
AK63-00247-0004	BZL/SW W/OVERLAY ASSY: MFG; SPN
AK63-00247-0006	BZL/SW W/OVERLAY ASSY: MFG; JAP
AK63-00247-0007	BZL/SW W/OVERLAY ASSY: MFG; FRN
AK63-00247-0008	BZL/SW W/OVERLAY ASSY: MFG; ITL
AK63-00247-0009	BZL/SW W/OVERLAY ASSY: MFG; DUT
AK63-00247-0010	BZL/SW W/OVERLAY ASSY: MFG; POR
AK47-00145-0001	BZL/SW OVERLAY ASSY: ENG/PAL
AK47-00145-0003	BZL/SW OVERLAY ASSY: GER/PAL
AK47-00145-0001	BZL/SW OVERLAY ASSY: SPN/PAL
AK47-00145-0007	BZL/SW OVERLAY ASSY: FRN/PAL
AK47-00145-0008	BZL/SW OVERLAY ASSY: ITL/PAL
AK47-00145-0009	BZL/SW OVERLAY ASSY: DUT/PAL
AK47-00145-0010	BZL/SW OVERLAY ASSY: POR/PAL

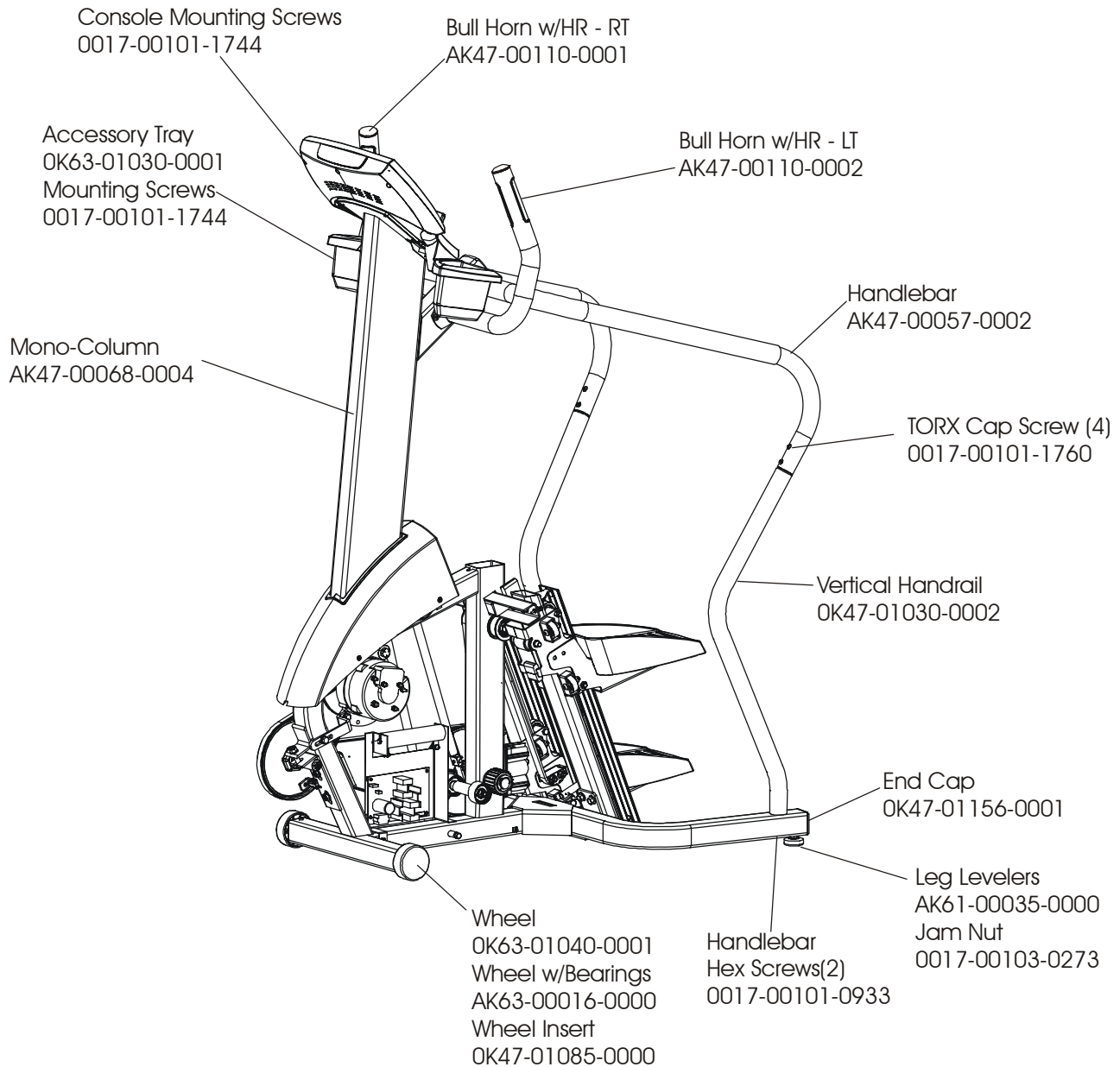
ARCTIC SILVER 95Se
Console Components

95SE-0XXX-02
S/N ACG100000 and UP



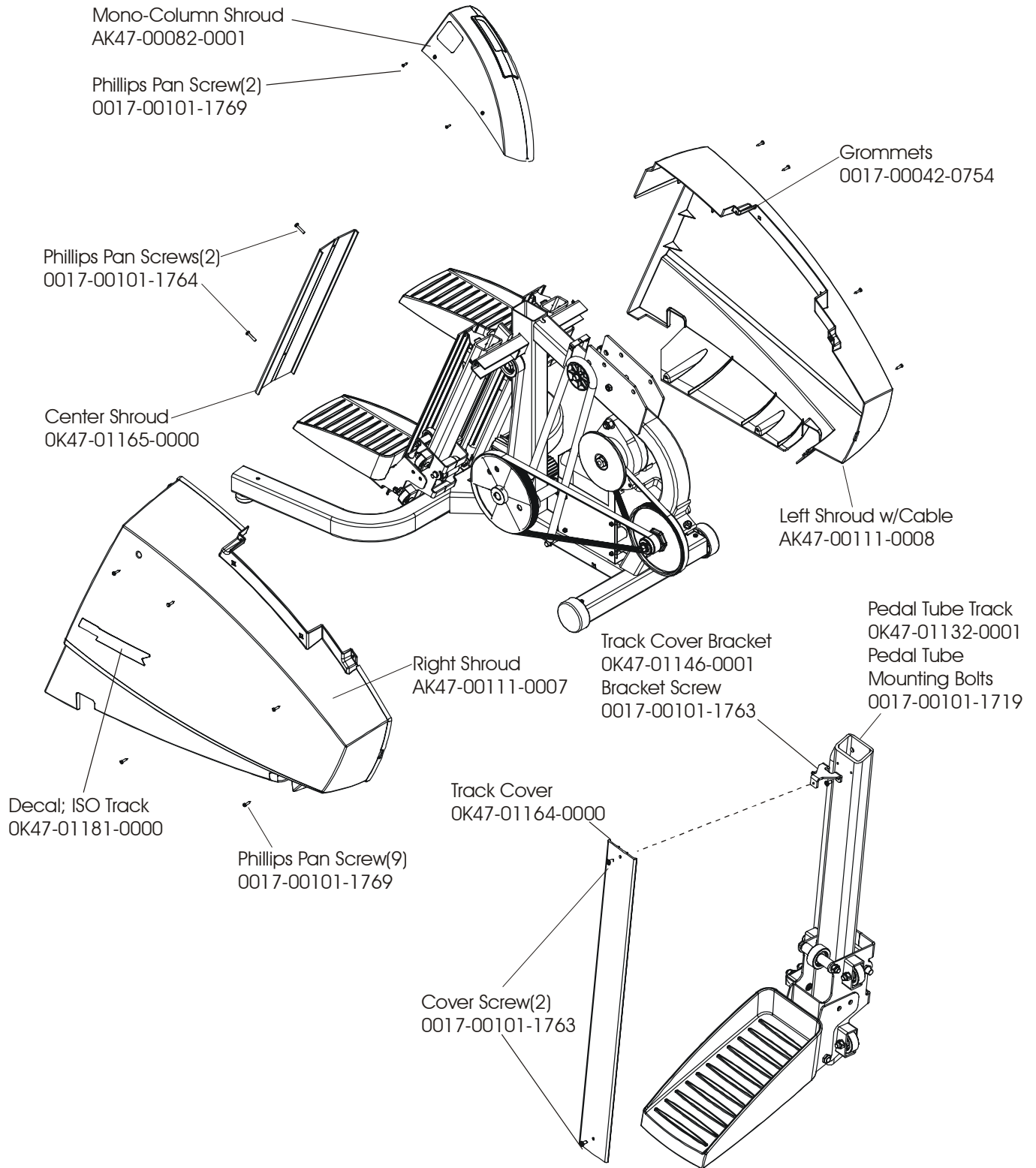
ARCTIC SILVER 95Se
Frame Components

95SE-0XXX-02
S/N ACG100000 and UP



ARCTIC SILVER 95Se
Shrouds and Pedal Tube

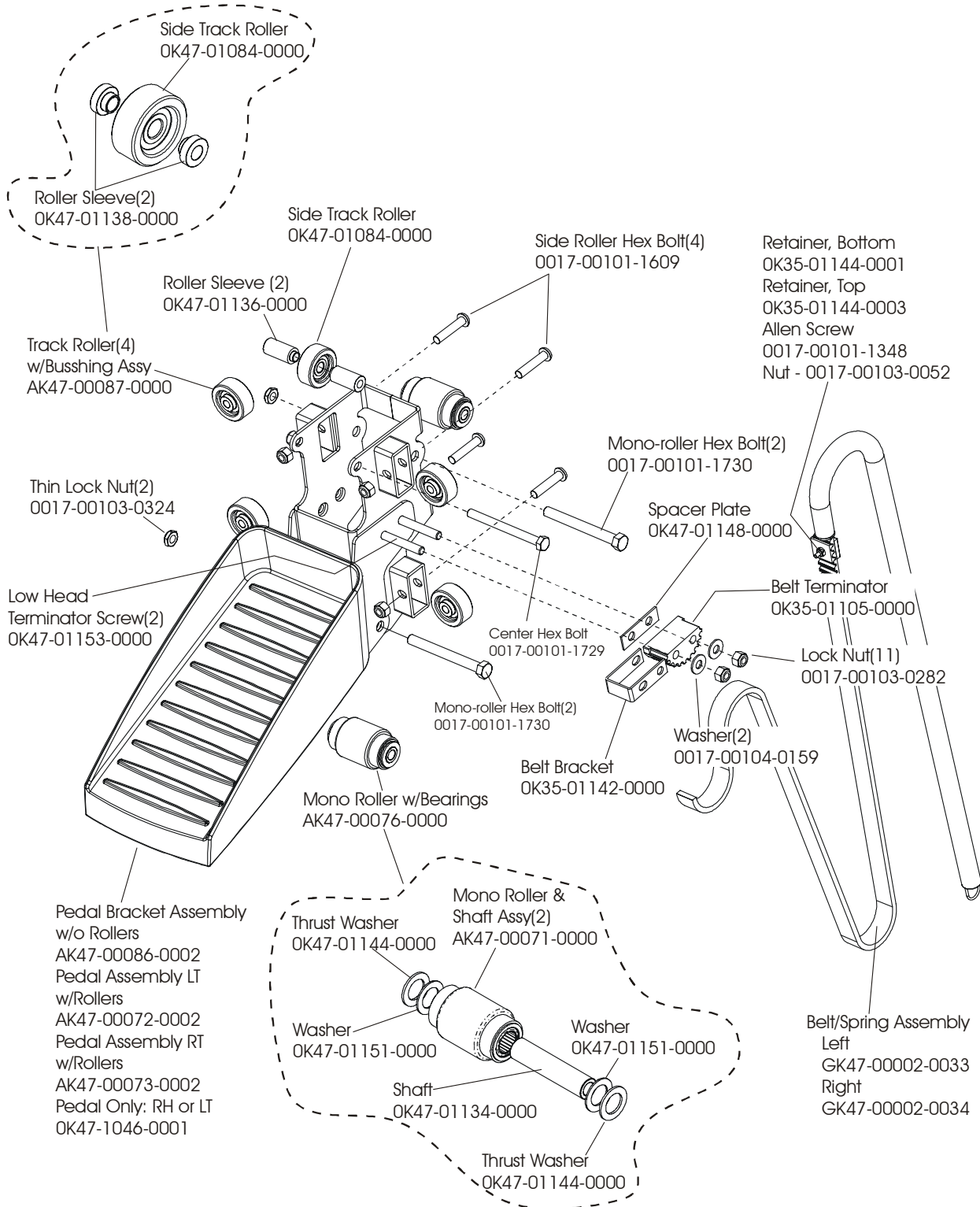
95SE-0XXX-02
S/N ACG100000 and UP



ARCTIC SILVER 95Se

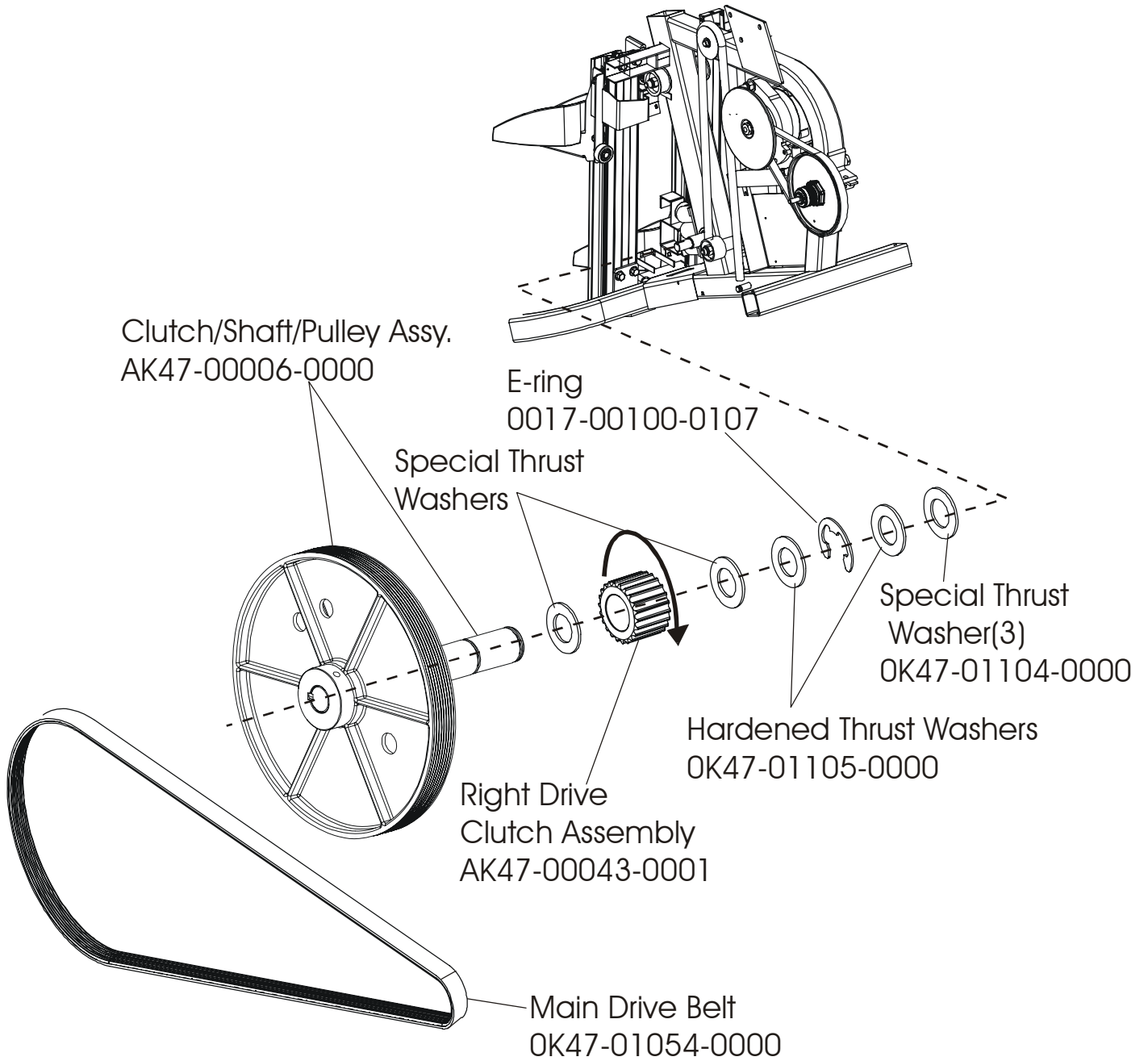
Pedal Assembly

95SE-0XXX-02
S/N ACG10000 and UP



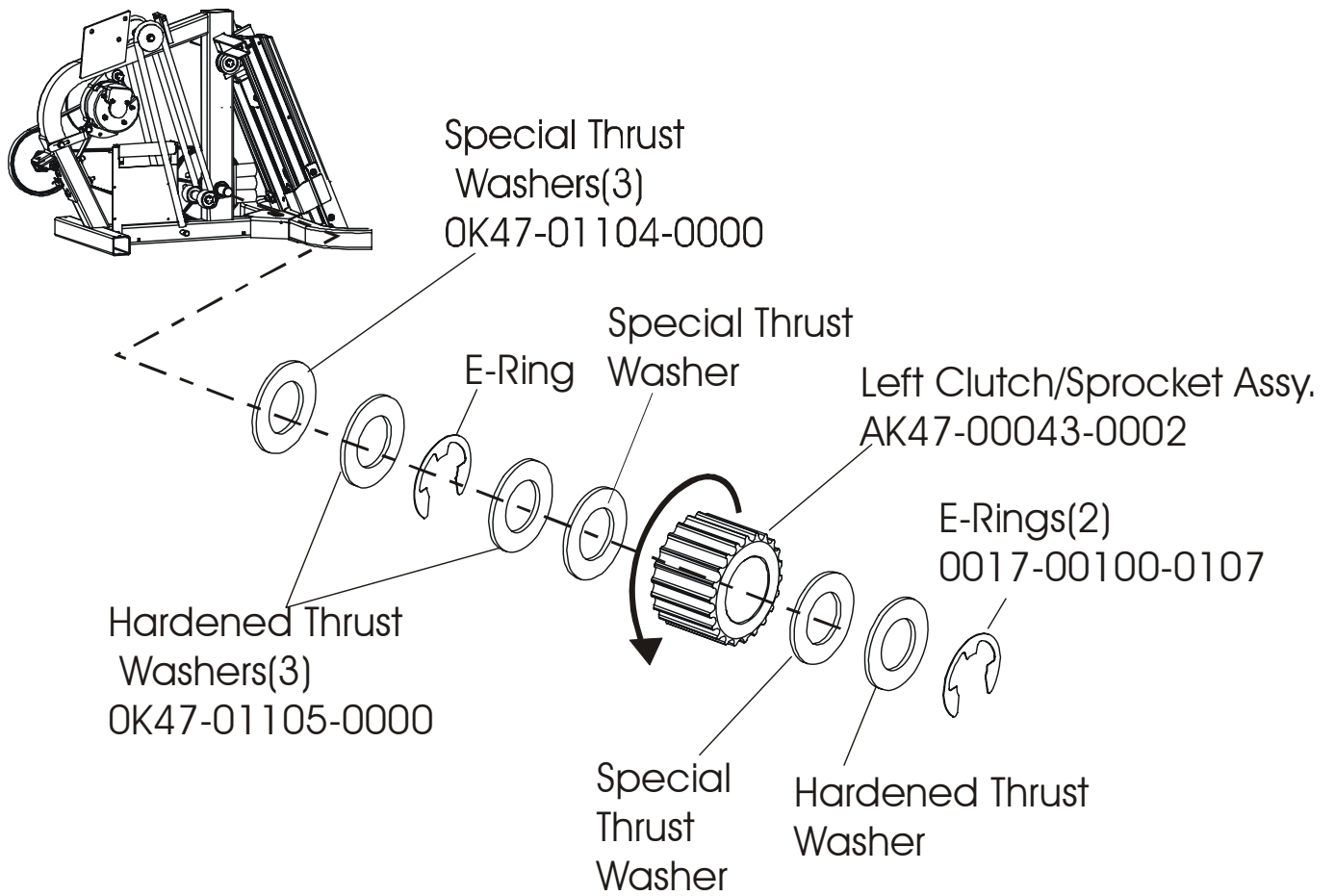
ARCTIC SILVER 95Se
Clutch/Shaft/Pulley Assembly

95SE-0XXX-02
S/N ACG100000 and UP



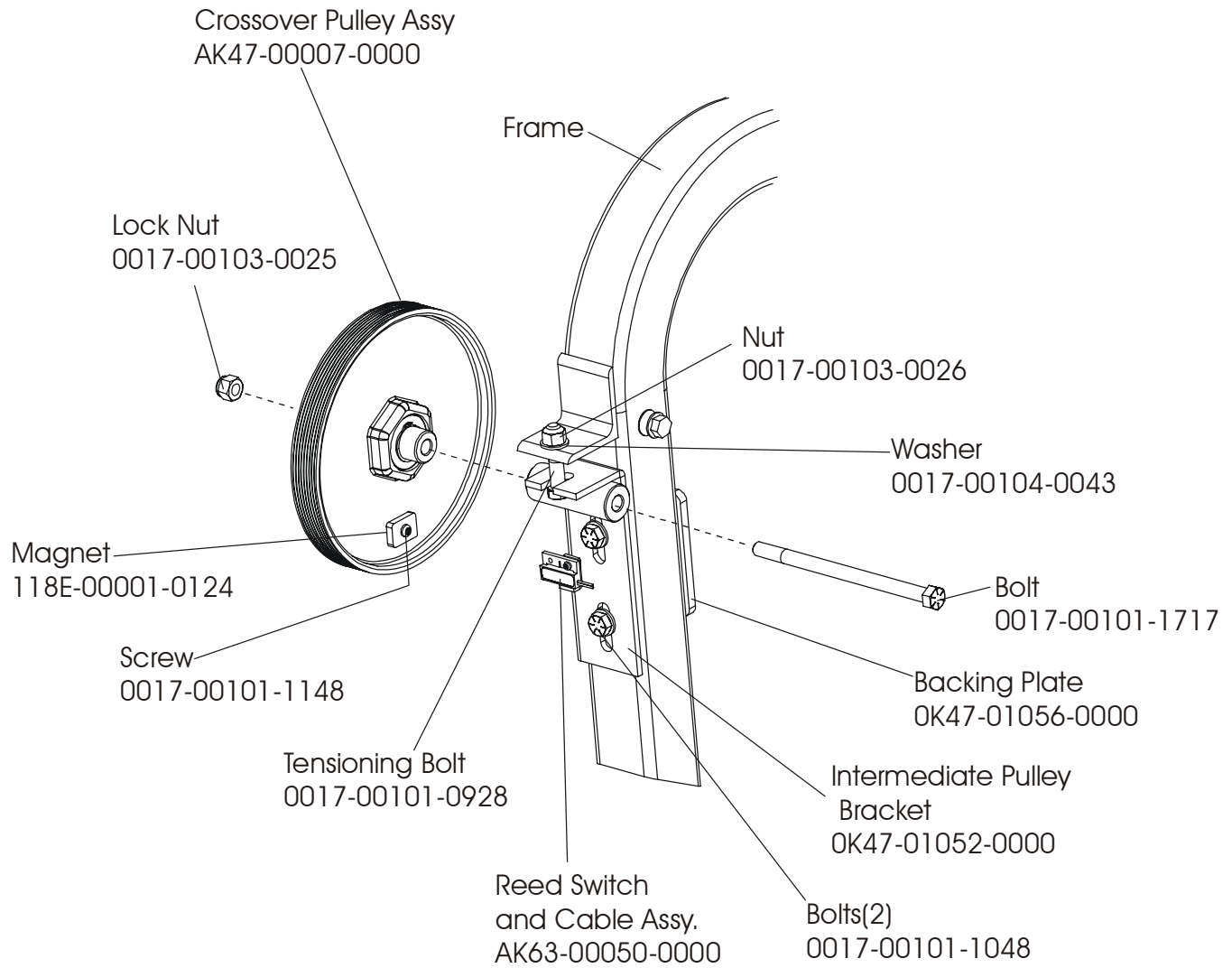
ARCTIC SILVER 95Se
Left Clutch Assembly

95SE-0XXX-02
S/N ACG100000 and UP



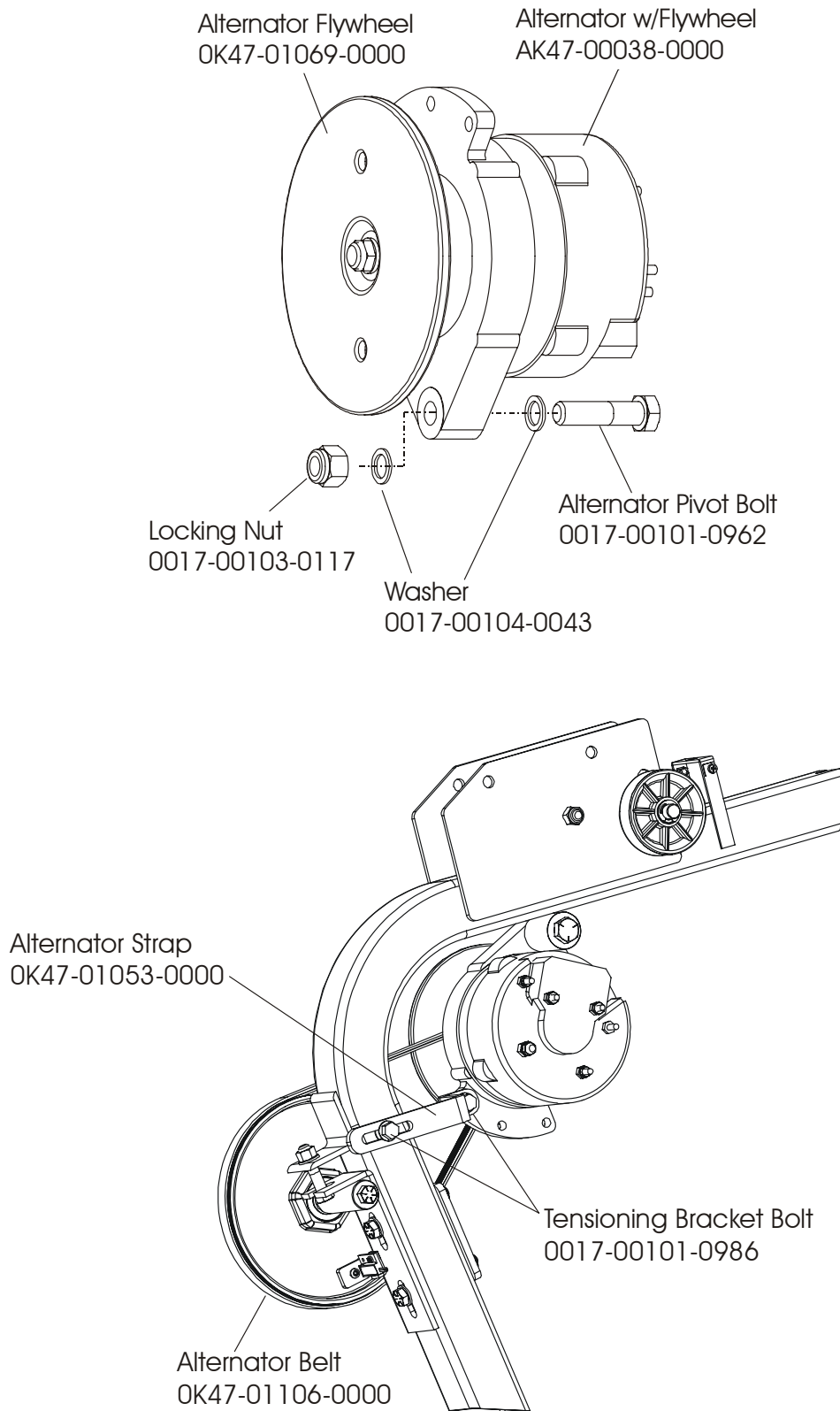
ARCTIC SILVER 95Se
Crossover Pulley Assembly

95SE-0XXX-02
S/N ACG10000 and UP



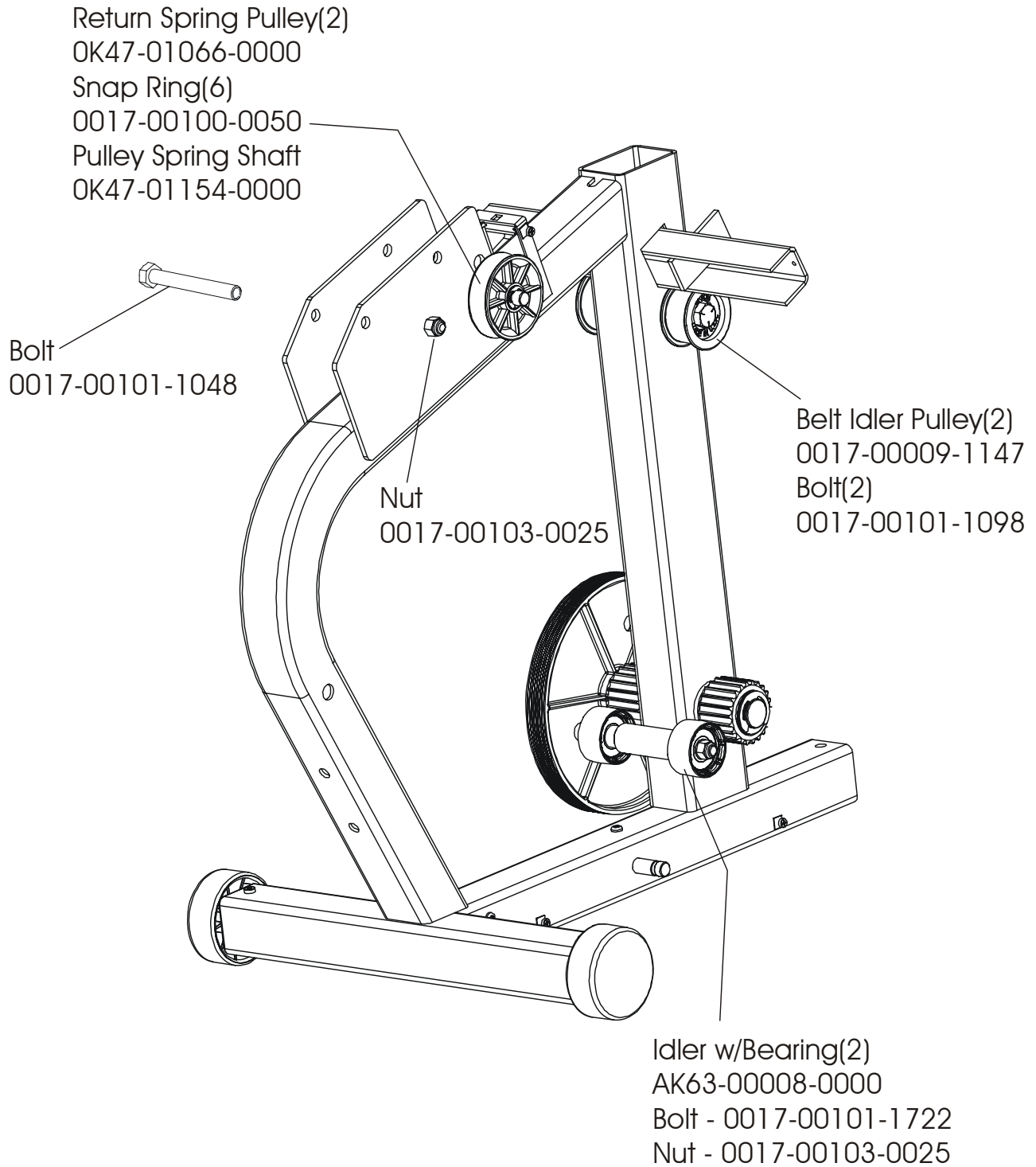
ARCTIC SILVER 95Se
Alternator Assembly

95SE-0XXX-02
S/N ACG100000 and UP



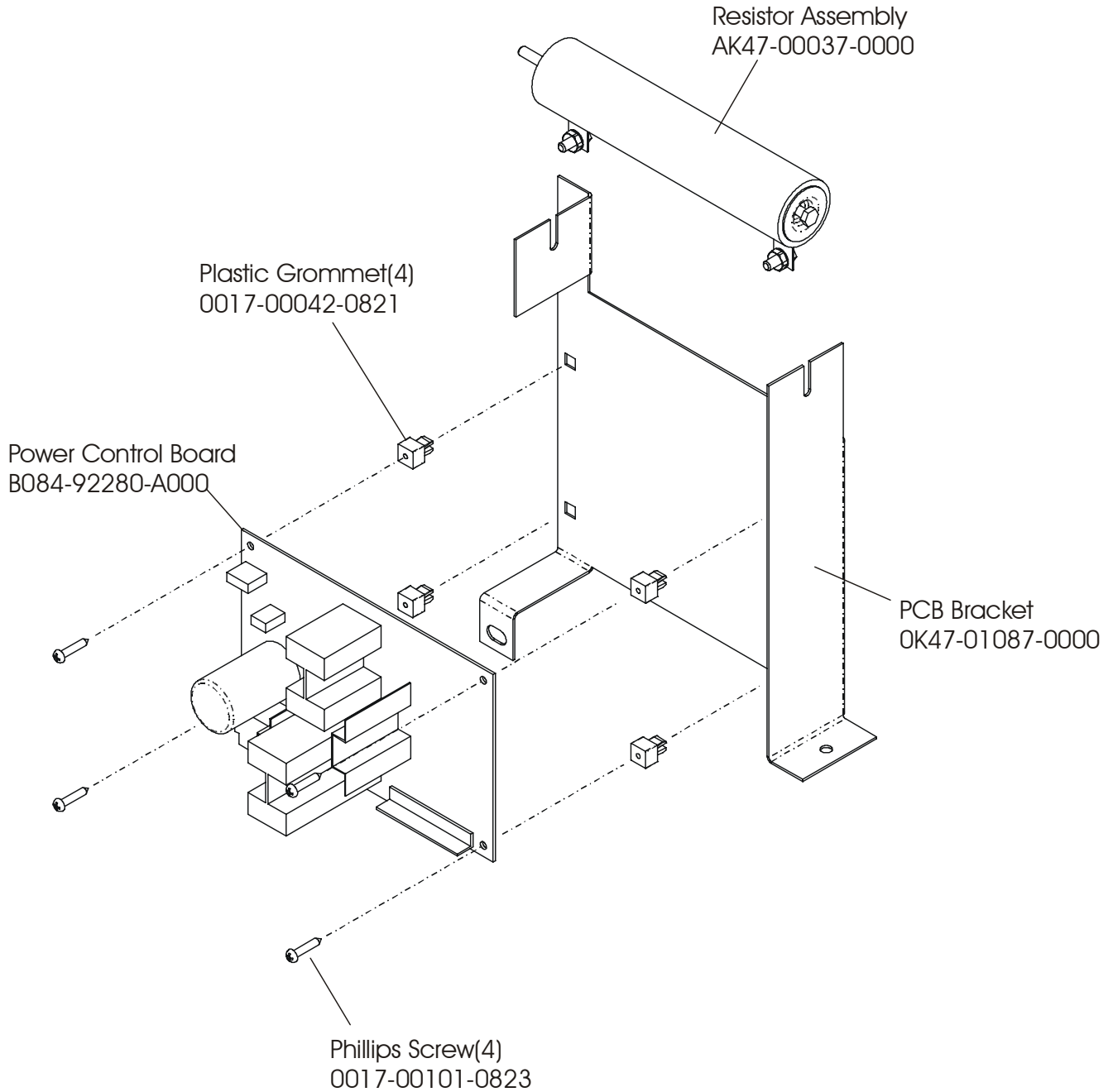
ARCTIC SILVER 95Se
Guide Rollers

95SE-0XXX-02
S/N ACG100000 and UP



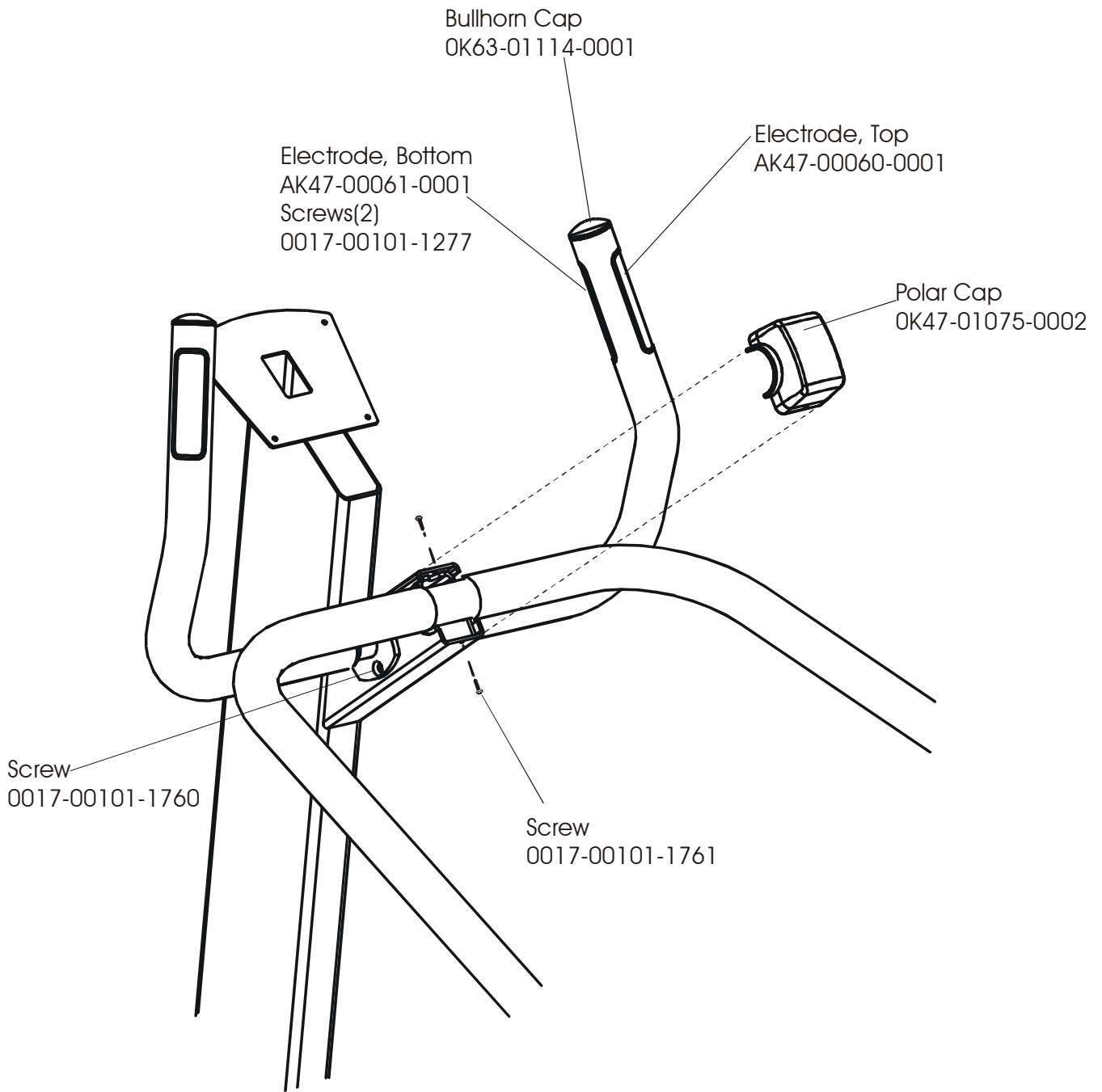
ARCTIC SILVER 95Se
Power Control Board & Resistor

95SE-0XXX-02
S/N ACG10000 and UP



ARCTIC SILVER 95Se
Polar Cap & HR Electrodes

95SE-0XXX-02
S/N ACG100000 and UP



ARCTIC SILVER 95Se Cables

95SE-0XXX-02
S/N ACG10000 and UP

